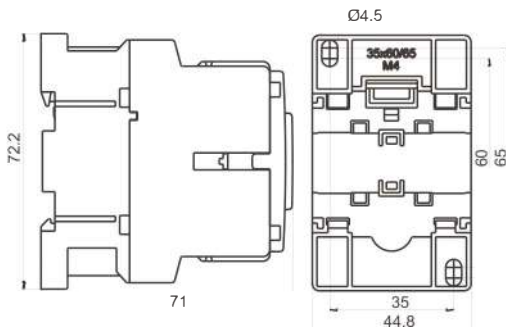


Dimensions



⚠ the maximum allowable peak current "I_p" must be less than 100 times the rms current of the switched capacitor.

WARNING: DANGEROUS VOLTAGE VALUES MAY CAUSE SHOCK AND BURNING. In THESE CIRCUMSTANCES, ALWAYS DISABLE POWER BEFORE INTERVENTION. DO NOT INTERFERE WITH CONTRACTORS AND DO NOT PRESS THE POSITION INDICATOR WHEN ENERGY IS IN THE SYSTEM AND THE LOAD IS LOCKED FUNCTION TEST WITHOUT CONDENSATOR DESARGATION NO FUNCTION TEST WITHOUT DESARGING.

VERY IMPORTANT NOTE:

For single compensation air coils or 3-phase reactors (coils with magnetic core and air gap) are not necessary.

When the contactor is used for group (central) compensation we recommend to use appropriate 3-phase filter circuit reactors (coils with magnetic core and air gap).

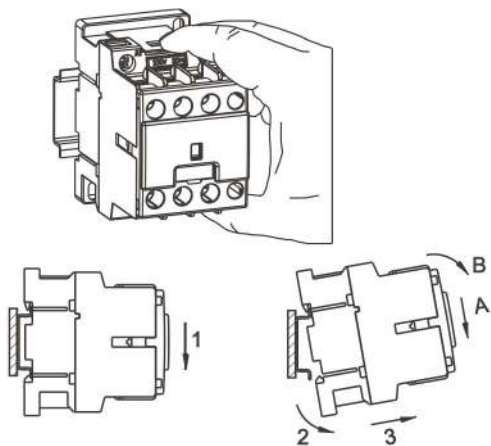
At single compensation the power of selected contactor is according to capacitors rated power.

At group and central compensation the power of selected contactor has to be one step higher than-capacitor's rated power (if you don't use reactors).

During exploitation, current value must not exceed the declared values. Use only HRC fuses gG type for each step for short circuit protection.

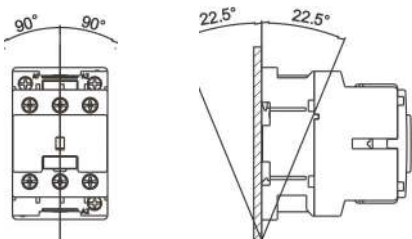
Use only halogen free connection wires.

RAIL MOUNT 35mm (DIN 50022)

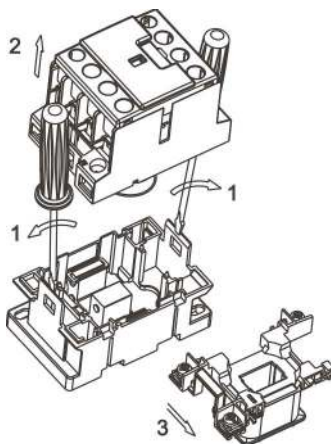


Contactor installation, step: A and B
Contactor removal, step: 1, 2 and 3

Installation Types



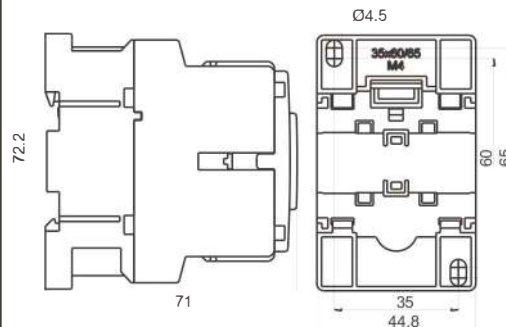
CHANGING THE COIL



CABLE SELECTION

| | KKNT-2.5 | KKNT-5.0 | KKNT-7.5 | |
|-----------|----------|----------|----------|-----------------|
| Solid | 1-5-6 | 2.5-10 | | mm ² |
| | 1-5-6 | 2.5-10 | | |
| | + | 2.5-10 | | |
| | 1-5-6 | 2.5-10 | | |
| Fine Wire | 1-4 | 1.5-6 | | mm ² |
| | 1-4 | 1.5-6 | | |
| | + | 1.5-6 | | |
| | 1-4 | 1.5-6 | | |

Dimensions



⚠ the maximum allowable peak current "I_p" must be less than 100 times the rms current of the switched capacitor.

WARNING: DANGEROUS VOLTAGE VALUES MAY CAUSE SHOCK AND BURNING. In THESE CIRCUMSTANCES, ALWAYS DISABLE POWER BEFORE INTERVENTION. DO NOT INTERFERE WITH CONTRACTORS AND DO NOT PRESS THE POSITION INDICATOR WHEN ENERGY IS IN THE SYSTEM AND THE LOAD IS LOCKED FUNCTION TEST WITHOUT CONDENSATOR DESARGATION NO FUNCTION TEST WITHOUT DESARGING.

VERY IMPORTANT NOTE:

For single compensation air coils or 3-phase reactors (coils with magnetic core and air gap) are not necessary.

When the contactor is used for group (central) compensation we recommend to use appropriate 3-phase filter circuit reactors (coils with magnetic core and air gap).

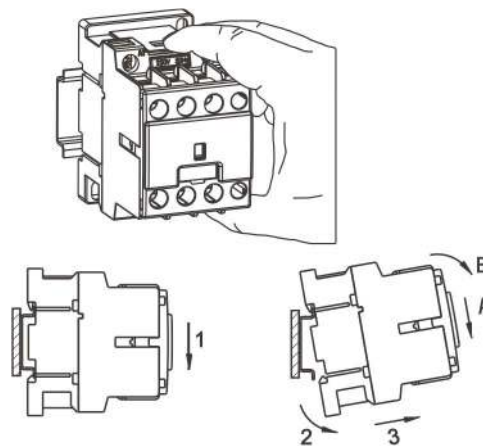
At single compensation the power of selected contactor is according to capacitors rated power.

At group and central compensation the power of selected contactor has to be one step higher than-capacitor's rated power (if you don't use reactors).

During exploitation, current value must not exceed the declared values. Use only HRC fuses gG type for each step for short circuit protection.

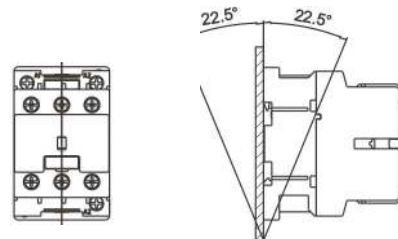
Use only halogen free connection wires.

RAIL MOUNT 35mm (DIN 50022)

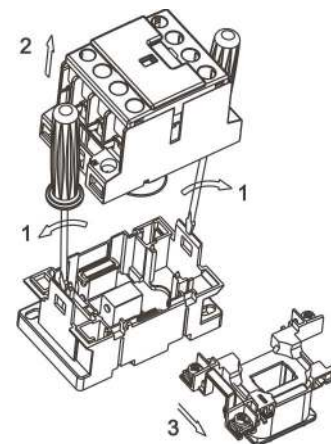


Contactor installation, step: A and B
Contactor removal, step: 1, 2 and 3

Installation Types



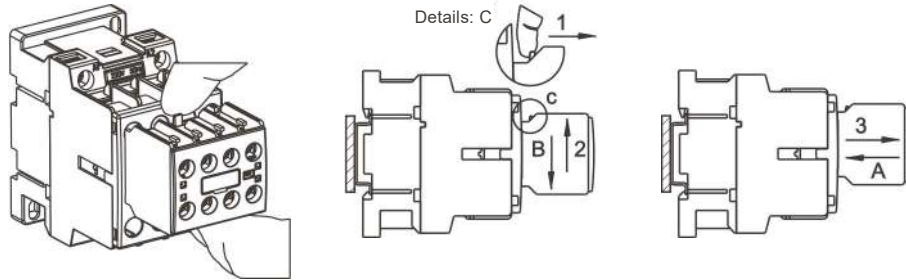
CHANGING THE COIL



CABLE SELECTION

| | KKNT-2.5 | KKNT-5.0 | KKNT-7.5 | |
|-----------|----------|----------|----------|-----------------|
| Solid | 1-5-6 | 2.5-10 | | mm ² |
| | 1-5-6 | 2.5-10 | | |
| | + | 2.5-10 | | |
| | 1-5-6 | 2.5-10 | | |
| Fine Wire | 1-4 | 1.5-6 | | mm ² |
| | 1-4 | 1.5-6 | | |
| | + | 1.5-6 | | |
| | 1-4 | 1.5-6 | | |

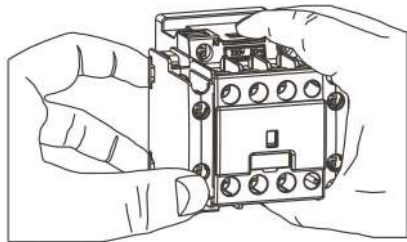
AUXILIARY CONTACT BLOG ASSEMBLY
BP2 and BP4



Follow steps A and B for installation of the upper auxiliary contact block.

Follow steps 1,2 and 3 as shown to remove the upper auxiliary contact block.

AUXILIARY CONTACT BLOG ASSEMBLY BP3



Assembly Step A



Assembly Step B



Assembly Step A1



Assembly Step B1



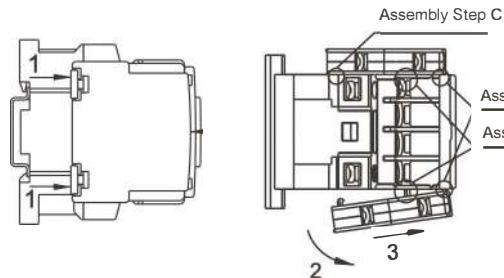
Assembly Step C



Follow steps A/A1, B/B1 and C for the installation of the side auxiliary contact block.

Follow steps 1,2 and 3 to remove the auxiliary side contact.

Always cut off the power before intervening.



- The fuses supplying the contactor must be between 1.6 times and 1.8 times the rated current $I_e(A)/AC-6b$.

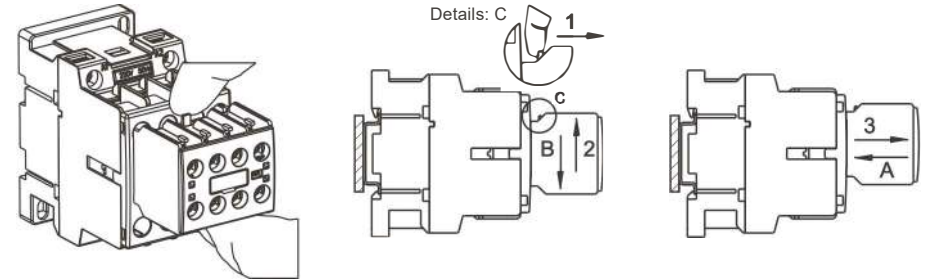
grup
ARGE

ADDRESS: İkitelli OSB Mah. Environment 14th Block Street. Telas Blok
Exterior Door No: 1 Floor: 1-2 Başakşehir/Istanbul
Telephone: +90 212 438 80 24 (PBX)
Fax +90 212 438 80 25
Technical Support: +90 212 438 61 17
Web: www.gruparge.com; www.enerjitakibi.com



RECYCLABLE

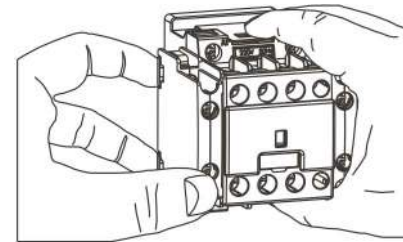
AUXILIARY CONTACT BLOG ASSEMBLY
BP2 and BP4



Follow steps A and B for installation of the upper auxiliary contact block.

Follow steps 1,2 and 3 as shown to remove the upper auxiliary contact block.

AUXILIARY CONTACT BLOG ASSEMBLY BP3



Assembly Step A



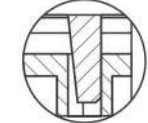
Assembly Step B



Assembly Step A1



Assembly Step B1



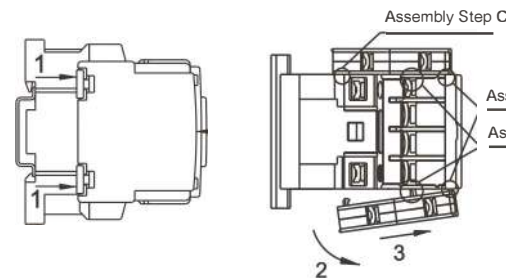
Assembly Step C



Follow steps A/A1, B/B1 and C for the installation of the side auxiliary contact block.

Follow steps 1,2 and 3 to remove the auxiliary side contact.

Always cut off the power before intervening.



-The fuses supplying the contactor must be between 1.6 times and 1.8 times the rated current $I_e(A)/AC-6b$.

grup
ARGE

ADDRESS: İkitelli OSB Mah. Environment 14th Block Street. Telas Blok
Exterior Door No: 1 Floor: 1-2 Başakşehir/Istanbul
Telephone: +90 212 438 80 24 (PBX)
Fax +90 212 438 80 25
Technical Support: +90 212 438 61 17
Web: www.gruparge.com; www.enerjitakibi.com



RECYCLABLE