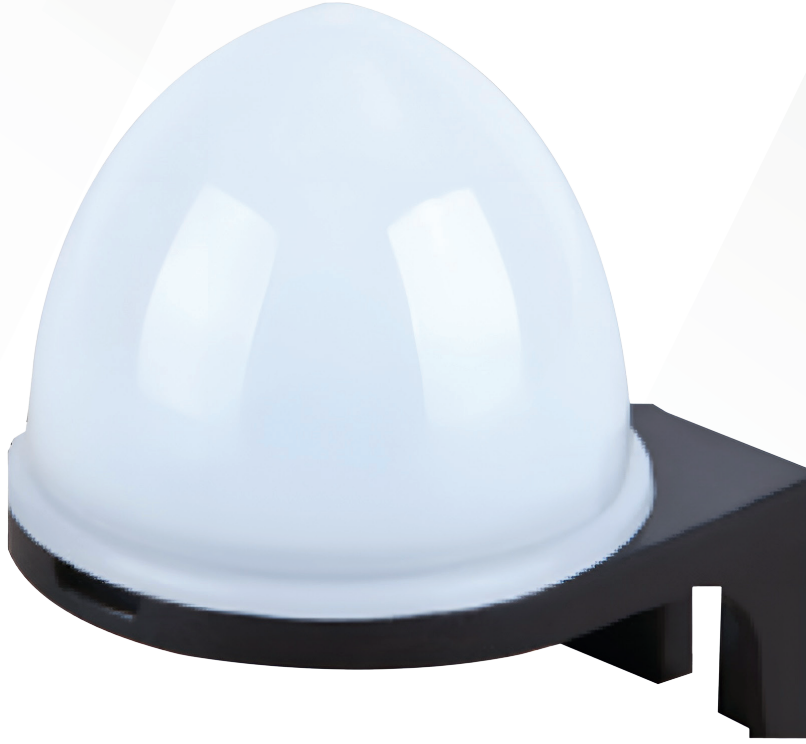


Temperature Sensor Datasheet



ADDRESS: Ikitelli OSB Mah. Cevre
14. Blok Sok. Telas Blok Dis Kapi
No: 1 Kat: 1-2 Basaksehir/Istanbul

Phone: +90 212 438 80 24
Fax: +90 212 438 80 25

info@gruparge.com

1.1. General Features

The temperature sensor device is used in conjunction with an Ethernet Terminal, GSM Automation Terminal, or GSM Terminal. It enables the opening or closing operation of the device monitored by the output module within the value ranges determined by measuring the temperature.

1.2. Technical Features

- Microprocessor based.
- It works with 12 V DC supply.
- It supports RS-485 Standard Modbus RTU protocol.
- Cable cross section is 4 x 0,22 mm².
- The temperature sensor cables can be connected directly to the terminal block.
- The temperature measuring range is -55 °C to +150 °C
- The device weight including the connecting cable is 40 grams in total .
- The dimensions of the device are (Width-Length-Depth) 50 x 50 x 50 mm .
- The power consumption is less than 1 VA.
- It has IP40 protection class.

1.3. Connection Diagrams

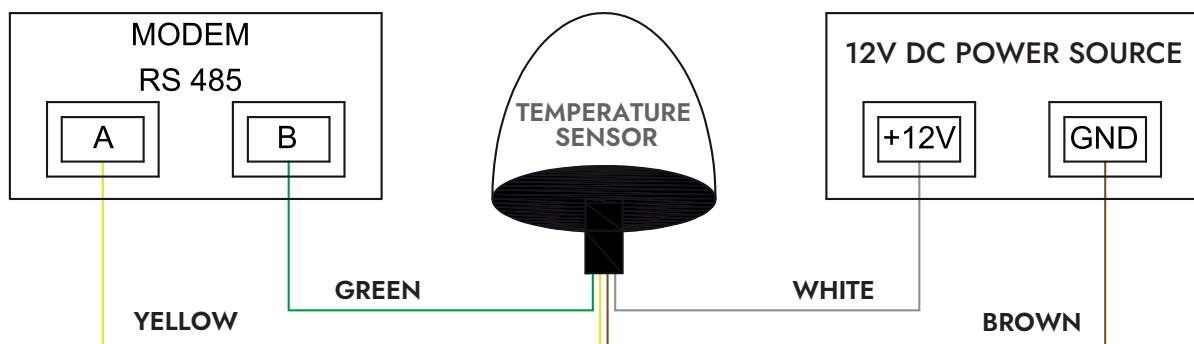


Figure 1

It is recommended to select the cable for RS-485 communications according to the table below.

Cable Distance	Recommended Cable	Alternative Recommendation
Up to 30 m	3*0,22 Shielded and Twisted Signal Cable	CAT-5 Ethernet Cable
Over 30 m	3*0,50 Shielded and Twisted Signal Cable	CAT-6 Ethernet Cable

2. MODBUS MAP

2.1. Modbus Map

MODBUS MAP					
TEMPERATURE SENSOR					
Device Information	Address	Multiplier	Unit	Type	W/R
Holding Register					
Serial Number	100	1	-	uint32	R
Temperature (°C)	1501	10	-	uint16	R

2.2. Communication Parameters

Baudrate	9600 bps
Data Bits	8
Parity	None
Stop Bits	1

NOTE: The default Modbus address is the number obtained by adding 100 to the last two digits of the serial number of the device. For example, suppose the serial number is 185247. Since it ends with 47, Modbus address becomes 147.